

Irish Lullaby (Traditional Irish song) ¾ time

G C G Em G - D7
Over in Kil-larney, many years a-go

G C G
Me mother sang a song to me,
A7 Am7 - D7

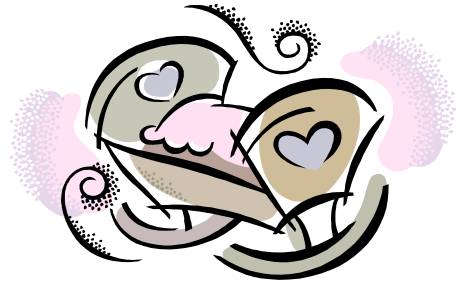
In tones so sweet and low

G C G
Just a simple little ditty,

Em G
In her good 'ould' Irish way

C G
And I'd give the world if she could sing

A7 Am7 - D7
That song to me to-day.



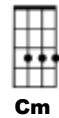
CHORUS

G C G -G7 C C#dim
Too-ra-loo-ra-loo-rah, Too-ra-loo-ra -li

G C G -G7 A7 D7
Too-ra-loo-ra-loo-rah, hush now don't you cry.

G C G -G7 C C#dim
Too-ra-loo-ra-loo-rah, Too-ra-loo-ra -li

G C G A7 Cm D7 G - D7
Too-ra-loo-ra-loo-rah, that's an Irish ↑lull -.↓a - ↑by.



G C G
Oft' in dreams I wander

Em G - D7
to that cot again

G C G
I feel her arms a-huggin' me

A7 Am7 - D7
as when she held me then.

G C G
And I hear her voice a hummin' to me,

Em G
as in the days of yore,

C G
When she used to rock me fast asleep

A7 Am7 - D7
out-side the cabin door.

CHORUS